

DATE: 10/23/09

CALLSIGN: SCAR 3-2

MISSION # 09-0221 STEP: 14:40

ENG START: 14:50

T/O: 15:00

PILOT	CALLSIGN	AC#	LOADOUT:
COWBOY	SCAR 3-1	994	STATION
OZ	SCAR 3-2	952	1.
			2. 7 x M-151
			3. MK-82 (AIRBURST)
			4.
			5. GBU-38
			6.
			7. GBU-12 (1688)
			8.
			9. MK-82 (AIRBURST)
			10. TGP
			11.

CMS: 480 FLARE

GUN: HEI

FUEL: 11,087 LB

WEIGHT: 41,321 LB

### FLIGHT PLAN

WP	REMARKS	WP	REMARKS
1	KAJAKI		
2	NOW ZAD		
3	LASHKAR GAH		
4	GARMSIR		
5	TURN FOR HOME		
6	LAND KANDAHAR		

BINGO: 3,800 LB

### WEATHER

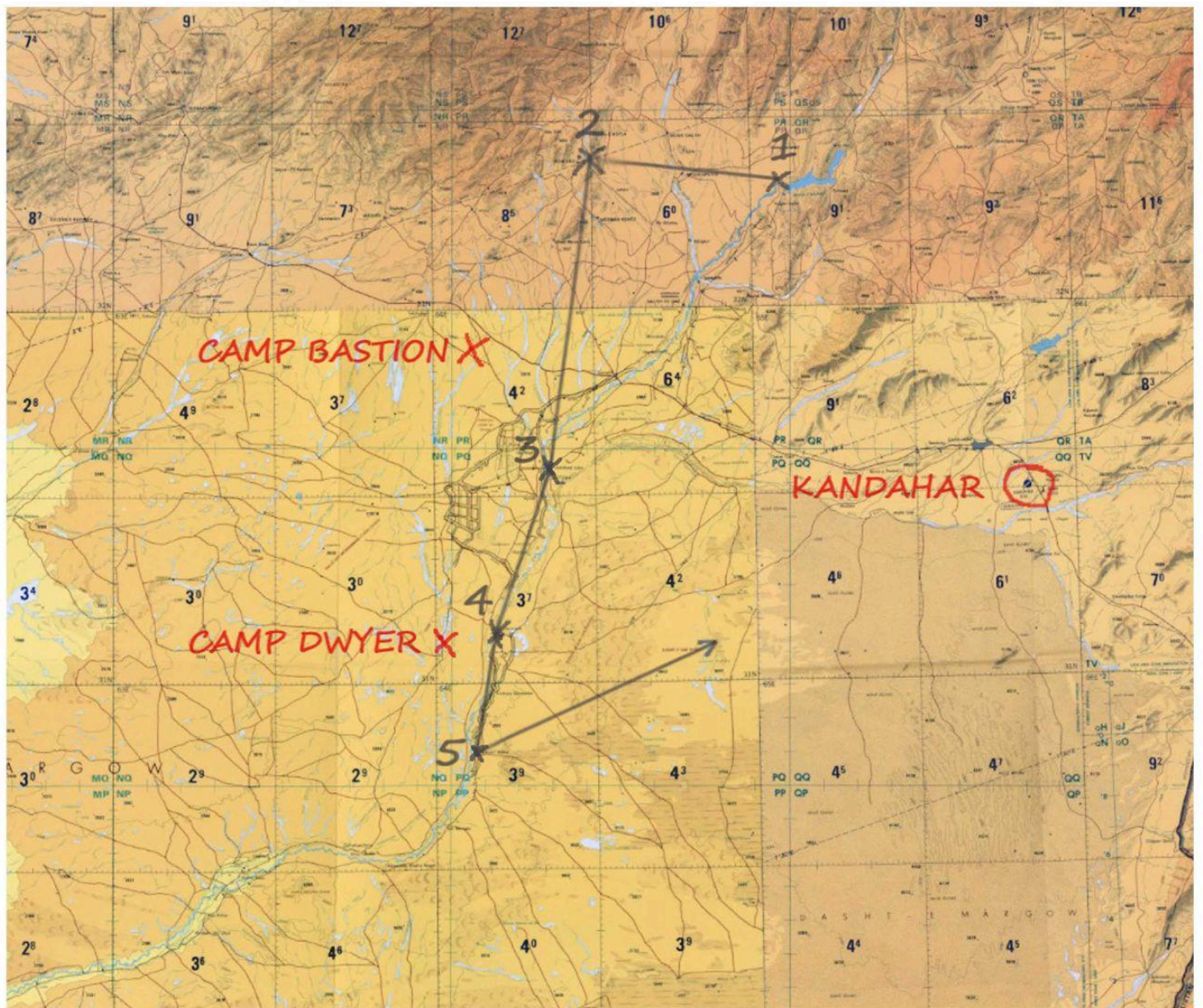
METAR OAKN 230800Z 07712KT 38700 R05/38700 SCT8700 25/8 A2992

## COMMS PLAN

	ARC-210	FREQ	UHF (ARC-164)	FREQ	VHF FM (ARC-186)	FREQ
1	K'HAR GROUND	119.5	SCAR 3	310.5		
2	KANDAHAR TWR	125.5				
3	K'HAR DEP/APP	121.1				
4	K'HAR ARRIVAL	124.0				
5	KANDAHAR ATIS	127.1				
6	SPARTAN	321.5				
7	TEXACO	320.0				
8	SHELL	350.0				
9	BLUE 1	138.0				
10	BLUE 2	140.5				
11	BLUE 3	144.3				
12	BLUE 4	147.8				
13	BLUE 5	149.6				
14	RED 1	152.2				
15	RED 2	153.3				
16	RED 3	154.0				
17	RED 4	155.0				
18	RED 5	156.0				
19	VIOLET 1	35.5				
20	VIOLET 2	43.8				
21	VIOLET 3	49.6				
22	VIOLET 4	56.2				
23	VIOLET 5	65.1				
24	VIOLET 6	72.7				
25	VIOLET 7	78.0				

RAMROD WORD = BLUEPRINTS

1	2	3	4	5	6	7	8	9	10
B	L	U	E	P	R	I	N	T	S



# RAMROD

1	CHAMPIONED
2	NIGHTMARES
3	THROWBACKS
4	WINGSPREAD
5	MISFORTUNE
6	OVERTAKING
7	AFTERSHOCK
8	CRYSTALIZE
9	LIFEGUARDS
10	DESTROYING
11	HEADSTRONG
12	MOTHERLAND
13	PROJECTING
14	SUBJECTING
15	UPHOLSTERY
16	QUADRICEPS
17	BREAKDOWNS
18	EXHAUSTING
19	WANDERLUST
20	TRAMPOLINE
21	REPUBLICAN
22	FORMIDABLE
23	BLUEPRINTS
24	DUPLICATES
25	INOCULATED
26	HYDROPLANE
27	GODFATHERS
28	JOURNALIST
29	OVERTAKING
30	TUMBLEDOWN
31	LUBRICATED

# AIRFIELD INFORMATION

## KANDAHAR

Coordinates: North 31 30 21, East 65 50 53

Airfield Elevation: 3340 ft MSL

Runway Heading: 054 / 234

Runway Dimensions: 141 x 10,177 ft

Min. Taxiway Width: G, W, F - 75 ft  
A, B, C, D, E - 100 ft

*Taxiway G can be utilized for Emergency Landings (75 ft x 7552 ft)*

Runway Dimensions: 141 ft x 10,177 ft

PAPI: RWY 05 / RWY 23

TACAN: KAF 75X

ATIS: 127.1 MHz

GROUND: 119.5 MHz

TOWER: 125.5 MHz

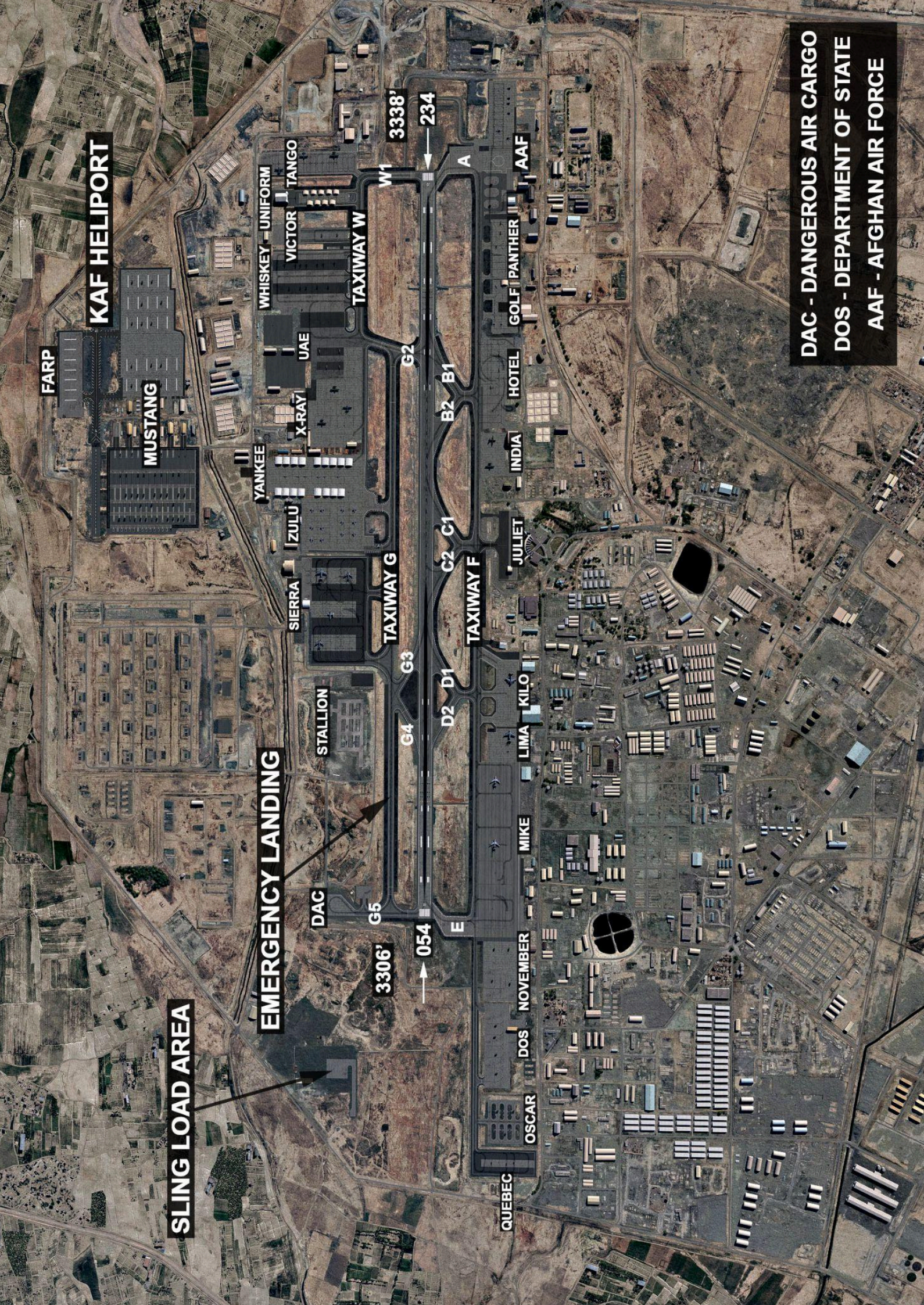
APPROACH/  
DEPARTURE: 121.1 MHz

ARRIVAL: 124.0 MHz

HAZARDS: Terrain - elev. 4540 ft MSL, 3.5nm NW of airfield.  
Terrain - elev. 4897 ft MSL, 13nm E of airfield.

RESTRICTIONS: Min alt for overflight of KHAR Heliport 3900 ft MSL,  
restriction applies from north side of KHAR RWY to  
river 2nm NW.

All airspace within 50nm of KAF and below FL200  
under control of KHAR tower.



**KAF HELIPORT**

FARP

MUSTANG

WHISKEY - UNIFORM

VICTOR TANGO

YANKEE

X-RAY

ZULU

SIERRA

STALLION

TAXIWAY W

TAXIWAY G

TAXIWAY F

TAXIWAY E

TAXIWAY D

TAXIWAY C

TAXIWAY B

TAXIWAY A

TAXIWAY W1

TAXIWAY G2

TAXIWAY G3

TAXIWAY G4

TAXIWAY G5

TAXIWAY W

UAE

INDIA

JULIET

MIKE

LIMA

KILO

NOVEMBER

DOS

OSCAR

QUEBEC

HOTEL

GOLF PANTHER

AAF

3306'

054

3338'

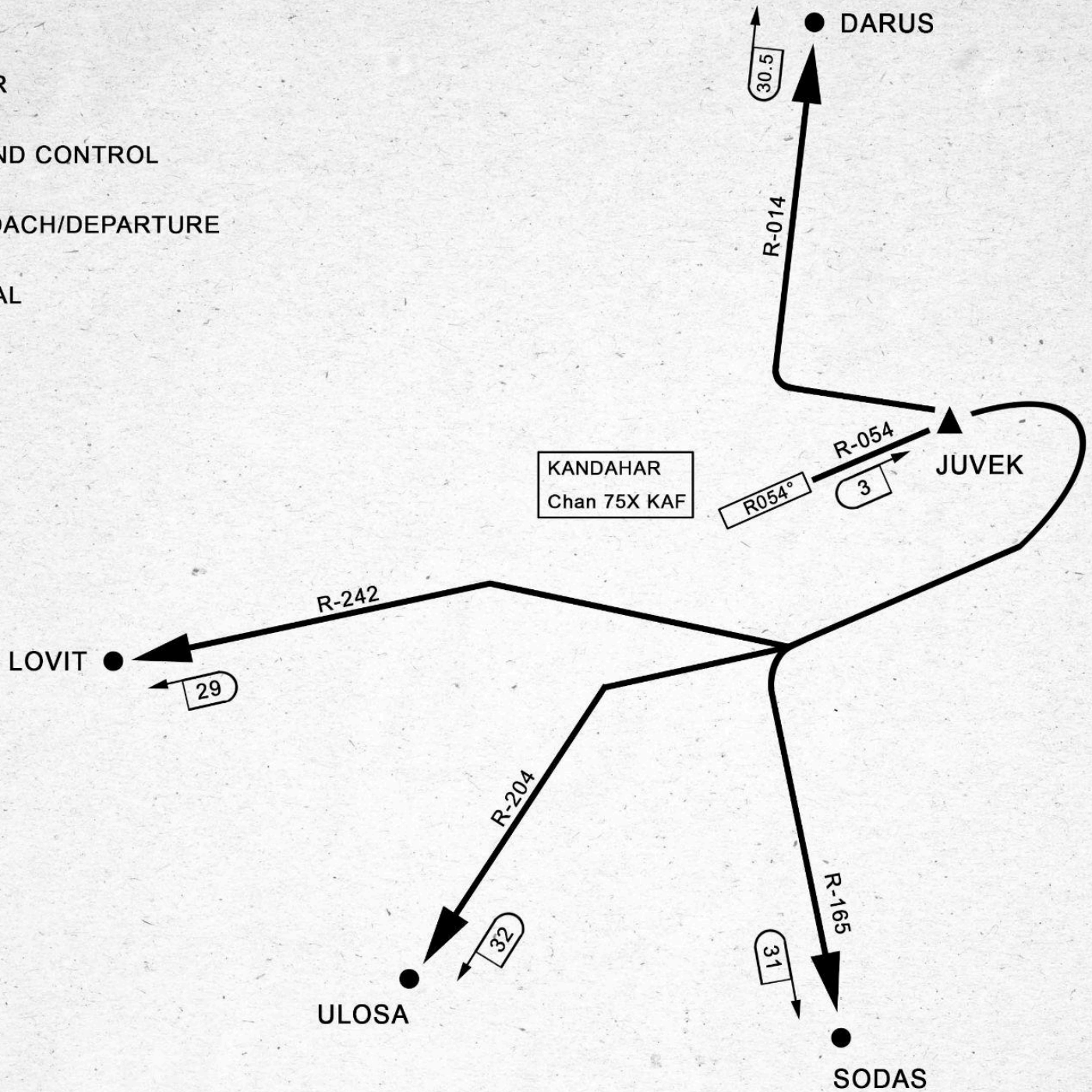
234

**SLING LOAD AREA**

**EMERGENCY LANDING**

**DAC - DANGEROUS AIR CARGO**  
**DOS - DEPARTMENT OF STATE**  
**AAF - AFGHAN AIR FORCE**

ATIS  
127.1  
TOWER  
125.5  
GROUND CONTROL  
119.5  
APPROACH/DEPARTURE  
121.1  
ARRIVAL  
124.0



**DEPARTURE ROUTE DESCRIPTION**

**TAKEOFF RWY 05:** Climb on track JUVEK (KAF R-054/3DME), then...

**DARUS:** left turn to intercept KAF R-014 DARUS (KAF R-014/30.5DME), climb assigned altitude.

**LOVIT:** right turn to intercept KAF R-242 LOVIT (KAF R-242/29DME), climb assigned altitude.

**ULOSA:** right turn to intercept KAF-204 ULOSA (KAF R-204/32DME), climb assigned altitude.

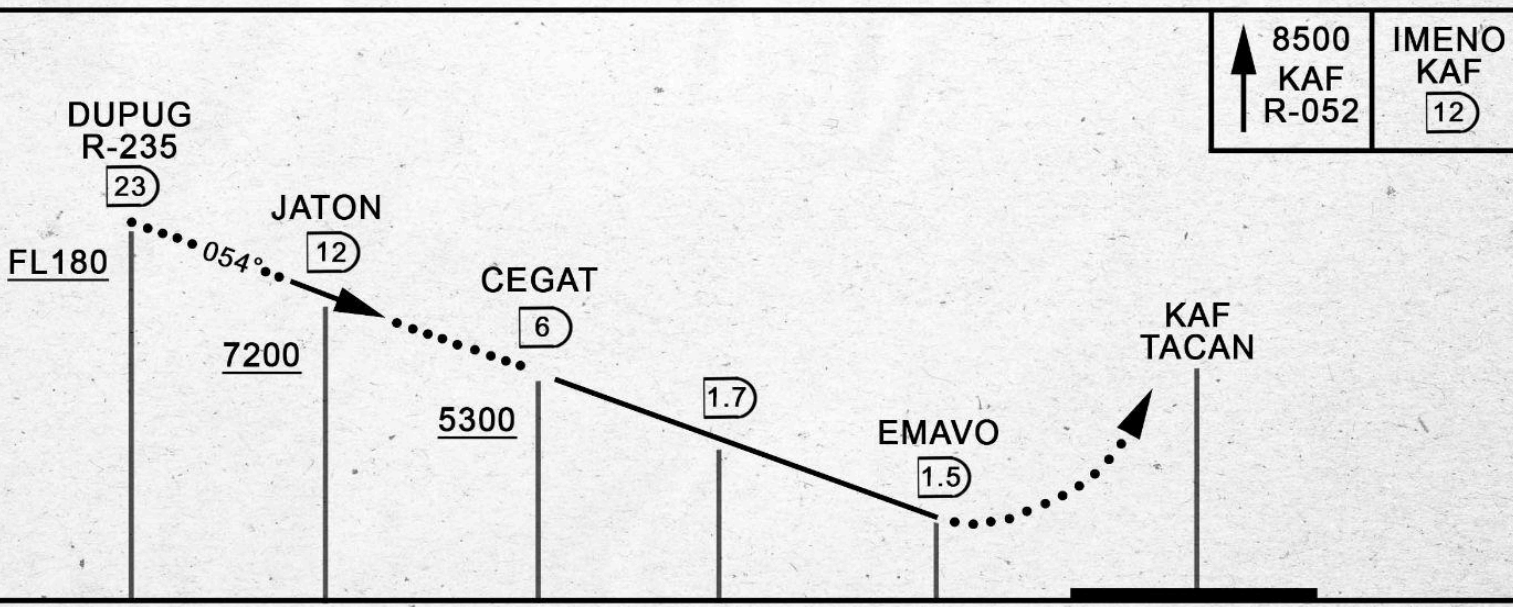
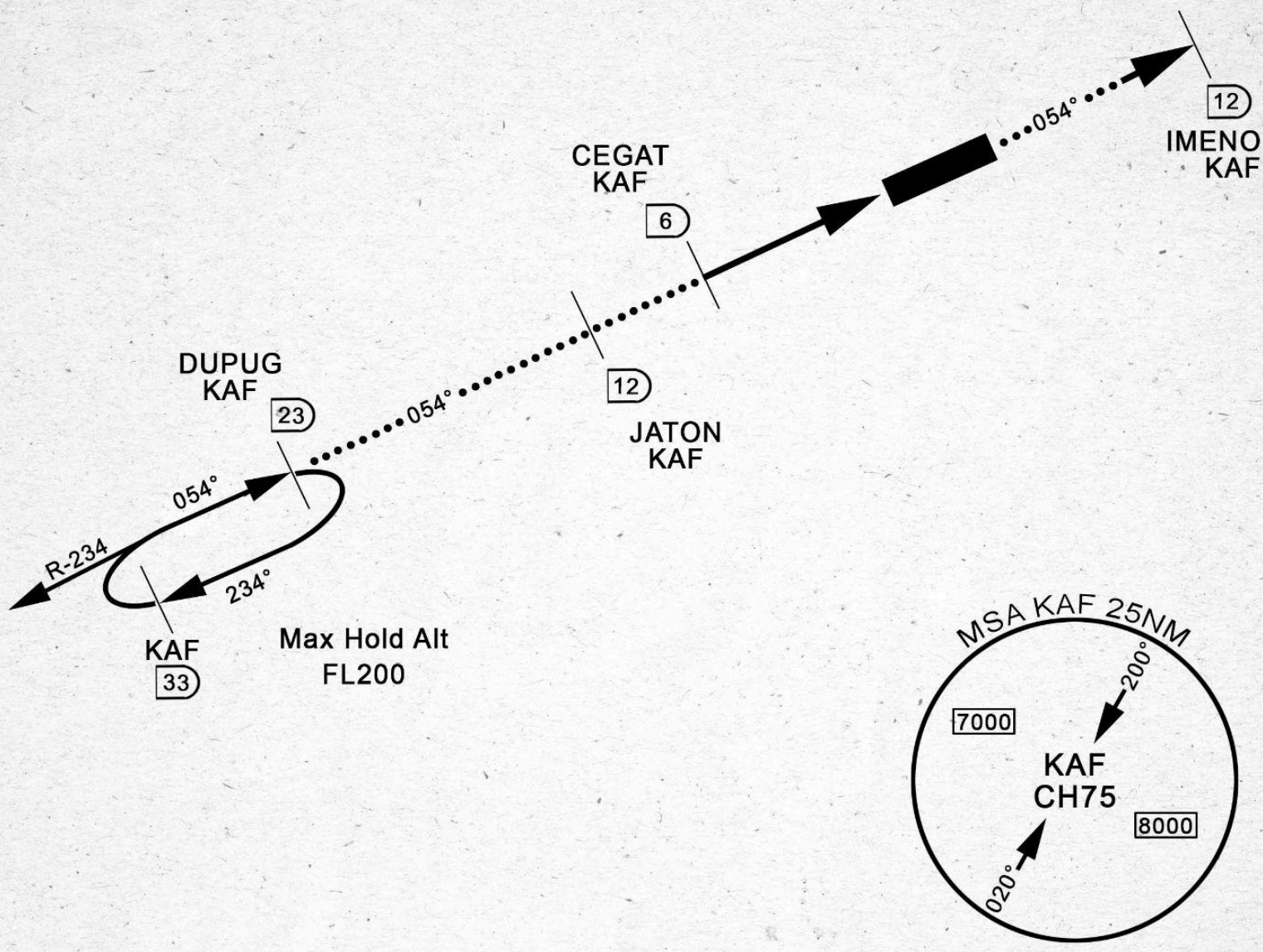
**SODAS:** right turn to intercept KAF-165 SODAS (KAF R-165/31DME), climb assigned altitude.

# RWY 05 APPROACH

KANDAHAR (OAKN)

TACAN KAF Chan 75X	APCH CRS 055°	Rwy Idg 10,487 THRE 3306 Elev 3340
-----------------------	------------------	--

ATIS 127.1	KANDAHAR TOWER 125.5	KANDAHAR ARRIVAL 124.0	KAN'HAR APP 121.1	GROUND 119.5
---------------	-------------------------	---------------------------	----------------------	-----------------



# RWY 05 APPROACH

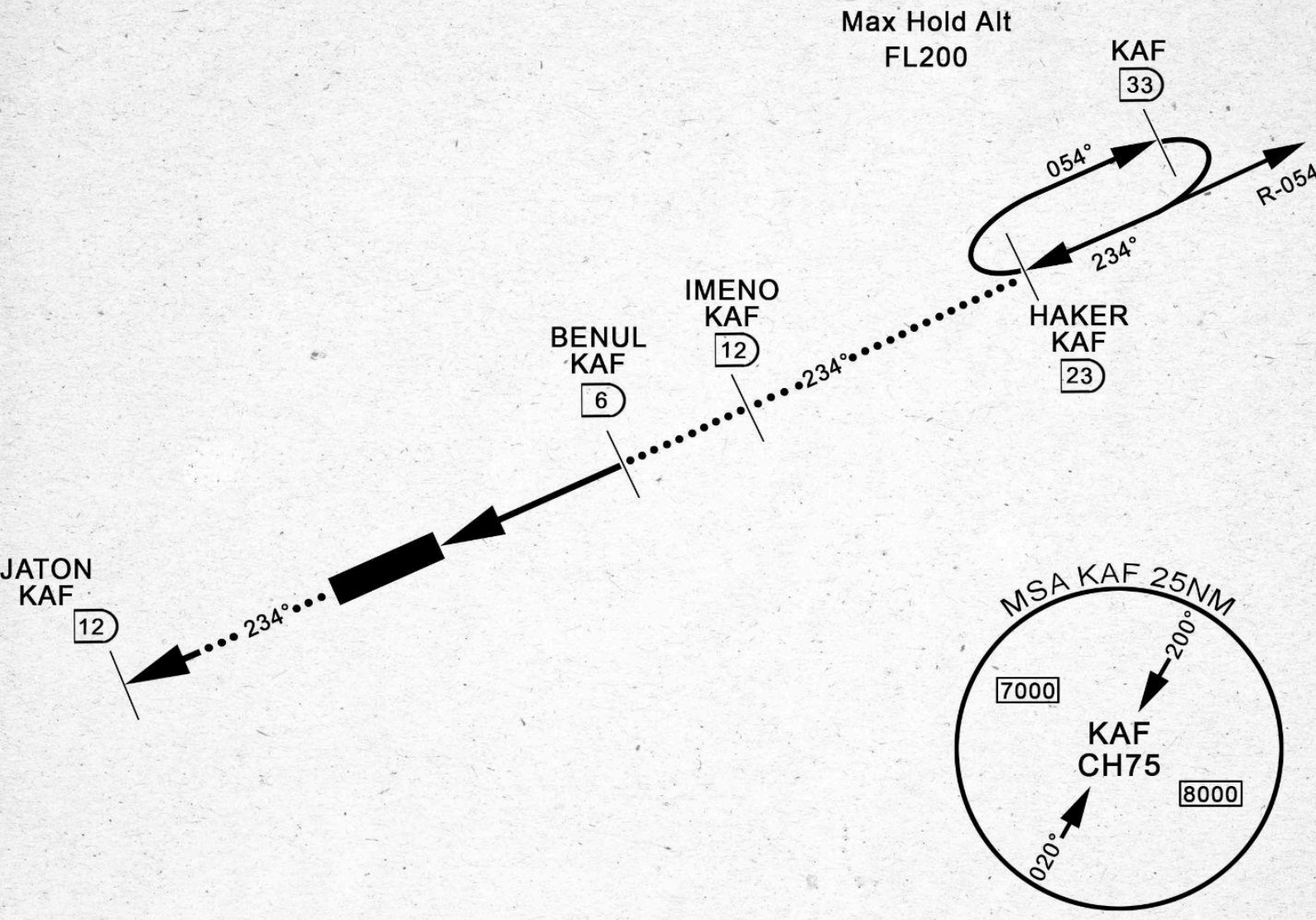
KANDAHAR (OAKN)

# RWY 23 APPROACH

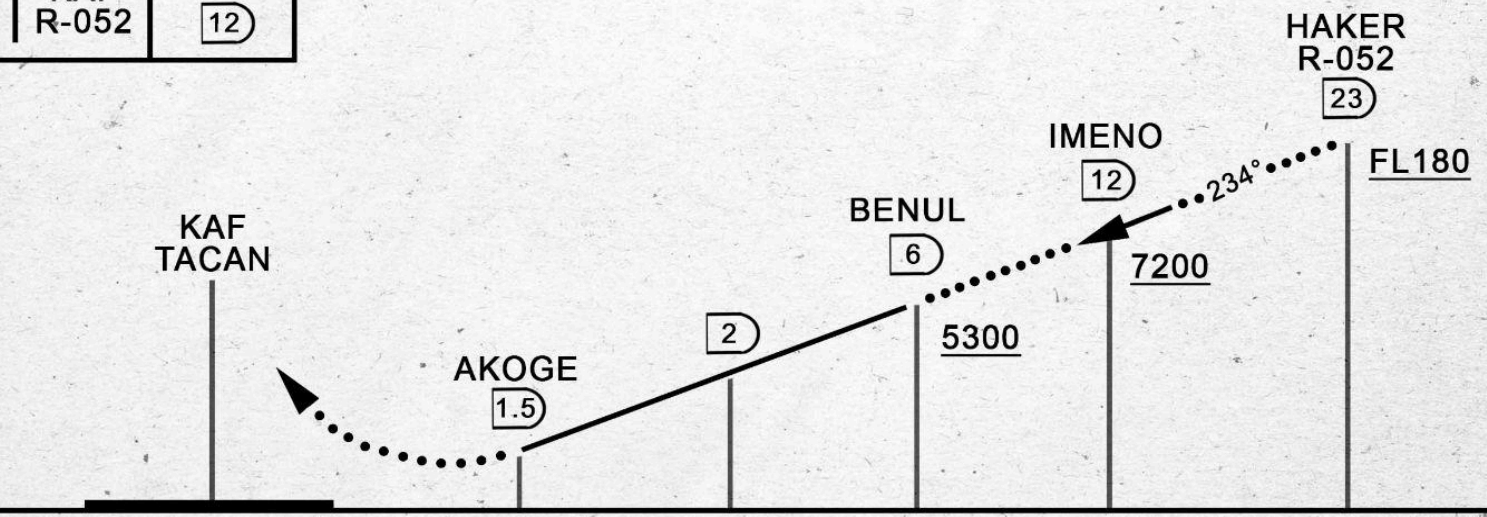
## KANDAHAR (OAKN)

TACAN KAF Chan 75X	APCH CRS 232°	Rwy Idg 10,483 THRE 3340 Elev 3340
-----------------------	------------------	--

ATIS 127.1	KANDAHAR TOWER 125.5	KANDAHAR ARRIVAL 124.0	KAN'HAR APP 121.1	GROUND 119.5
---------------	-------------------------	---------------------------	----------------------	-----------------



8500 KAF R-052	JATON KAF (12)
----------------------	----------------------



# RWY 23 APPROACH

KANDAHAR (OAKN)