

CALLSIGN DEVIL 3-1

DATE 18/06/14

MISSION # 2392	SIDE#	PILOT	TACAN	FUEL
STEP 22:15Z	107	STEEP DV 3-1		15,291 lb
START 22:45Z	103	SOPRANO DV 3-2	29X	BINGO 5,400 lb
LAUNCH 22:55Z				WEIGHT 50,321 lb
VUL START 23:30Z				STABS 19°
VUL END 23:40Z				

LOADOUT

1	2	3	4	5	6	7	8	9
AIM 9X	GBU 31	GBU 31	ATFLIR	FUEL	AIM 120C	FUEL	GBU 31	AIM 9X

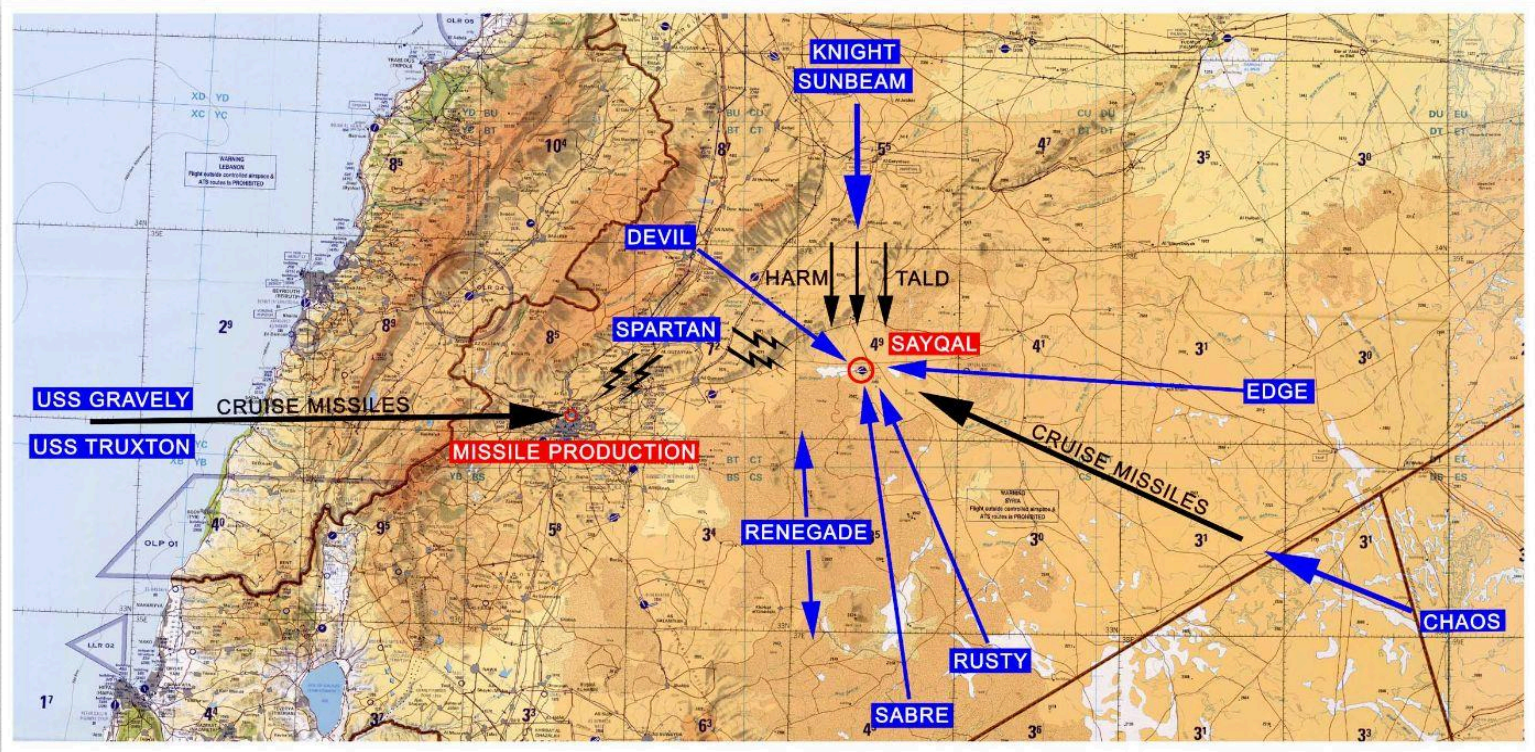
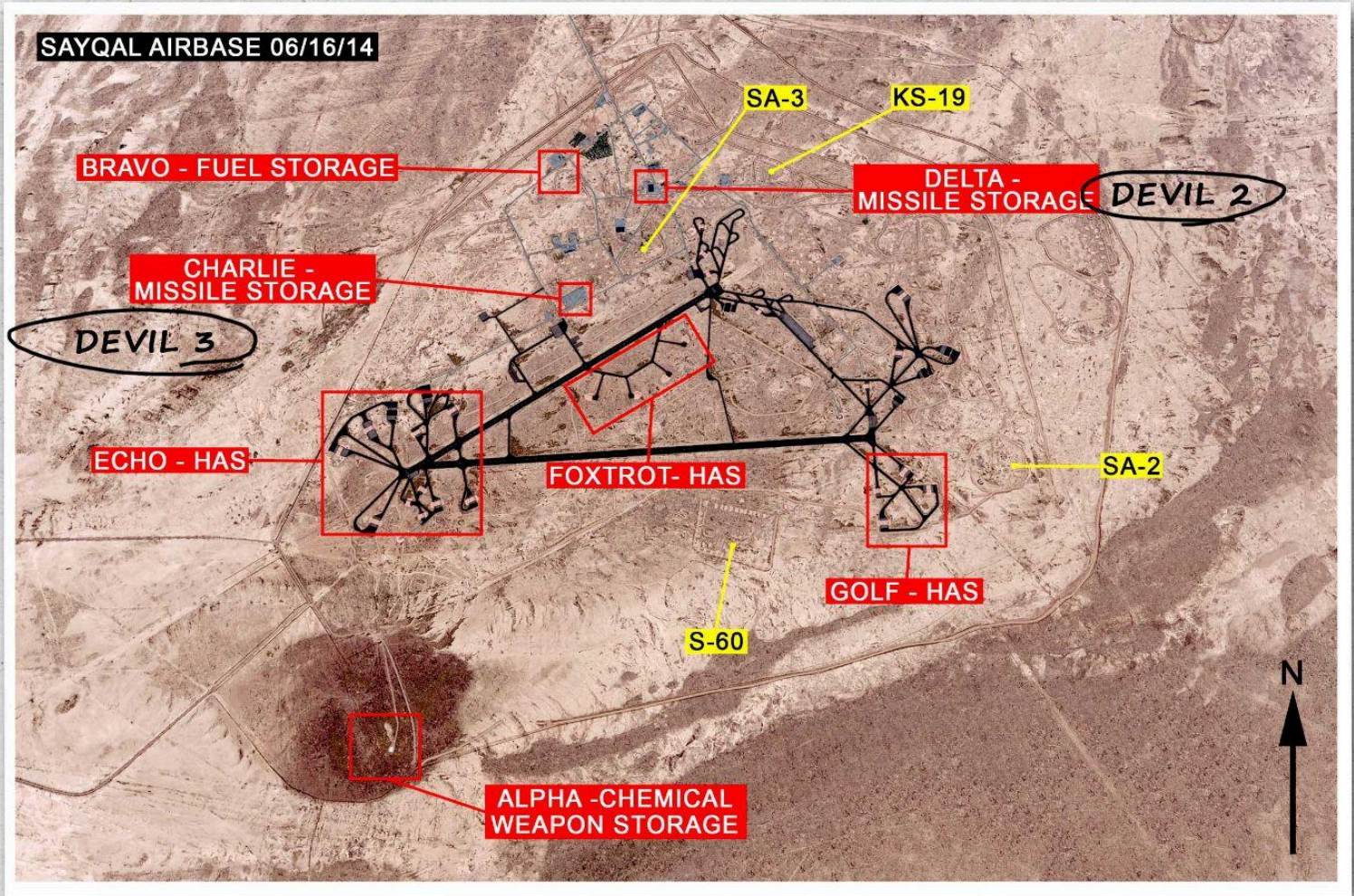
FUZING FMU-143 FMU-143 FMU-143
(0.03 MS) (0.03 MS) (0.03 MS)

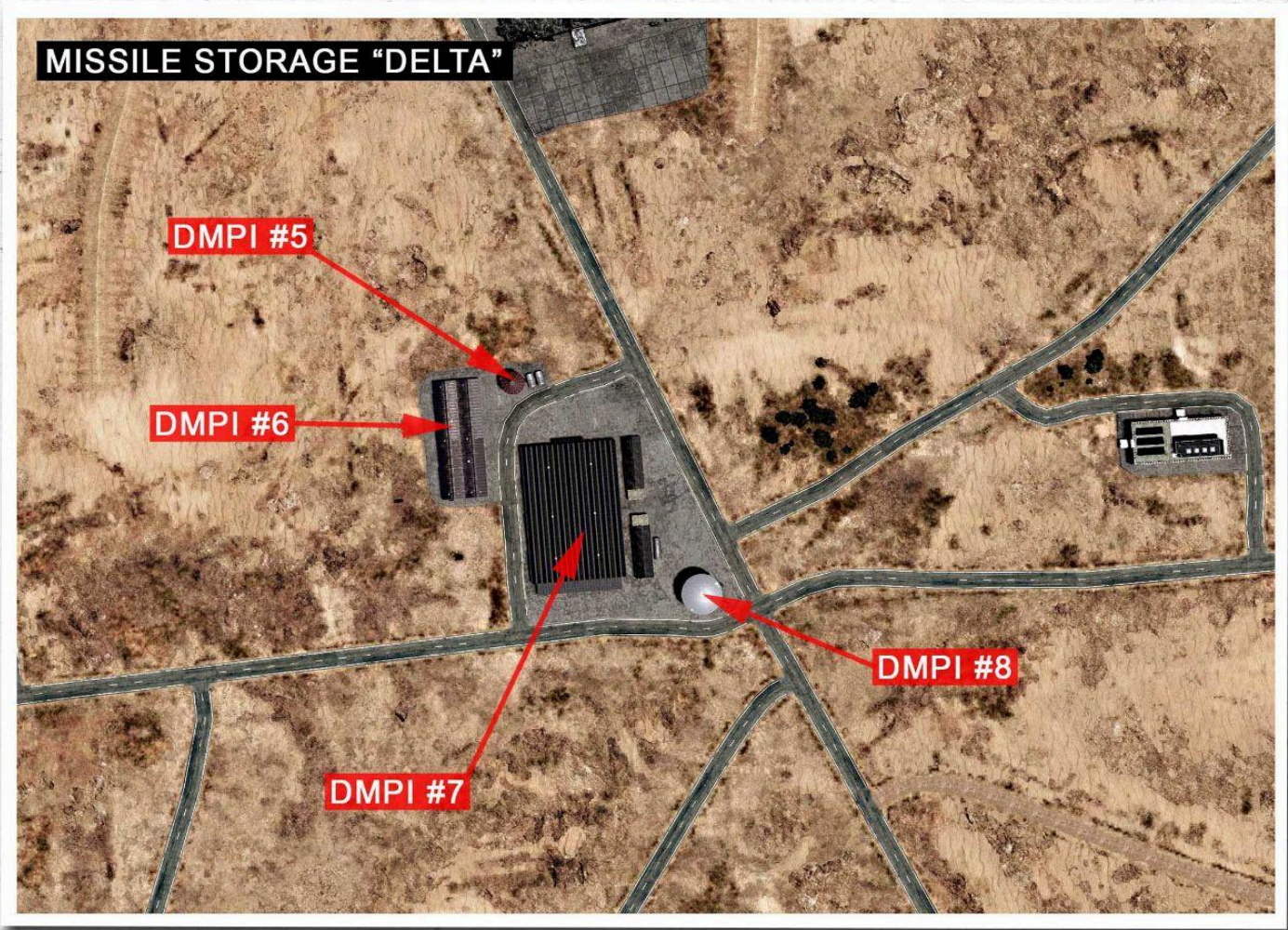
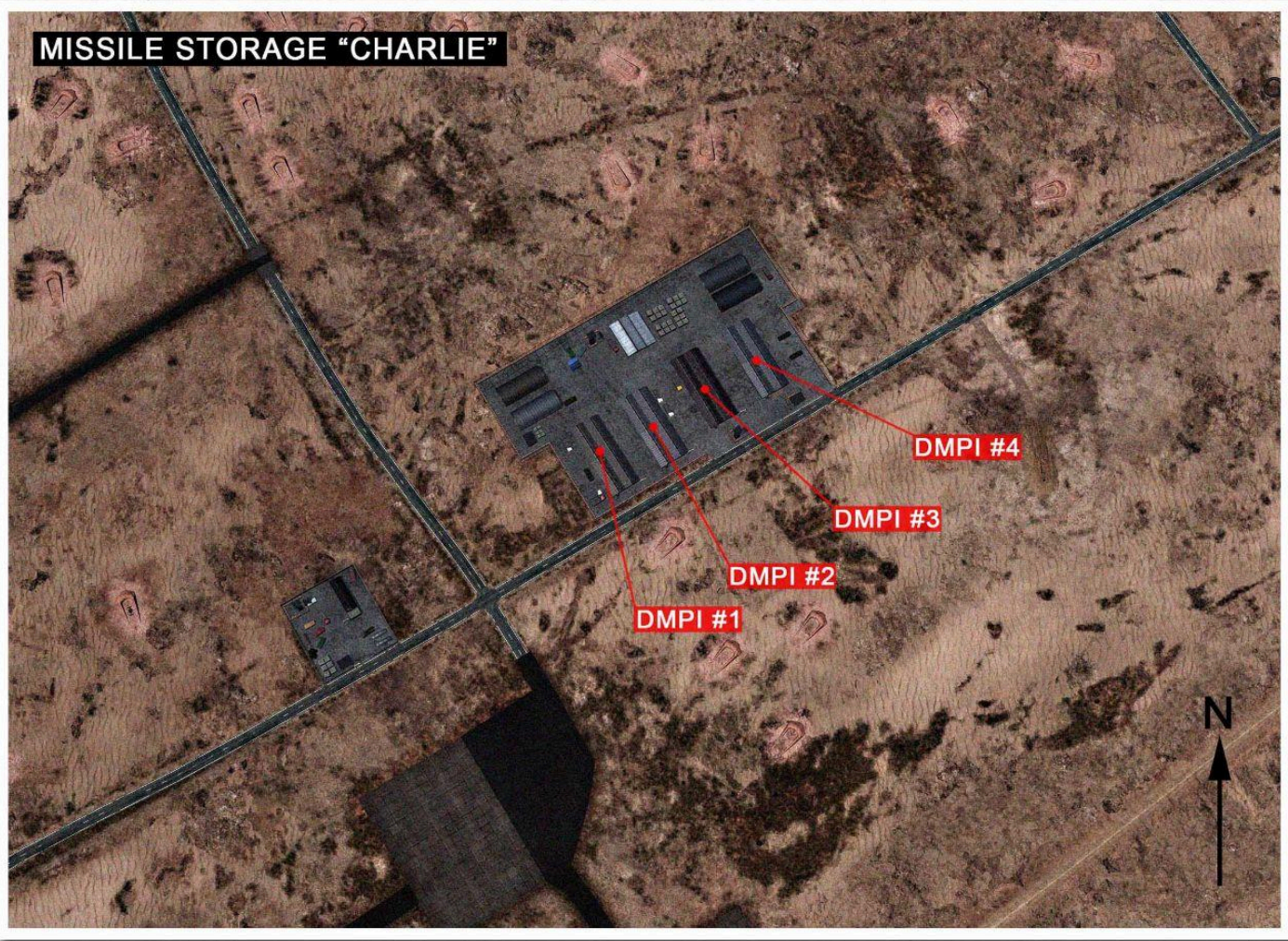
CMS: 80 CHAFF 40 FLARE

GUN: HEI-T

DEPARTURE CASE 3
BRC 205
DEPART RADIAL 103
TACAN 70X
PATTERN ALT
ICLS CH 18
LINK 4 330.5

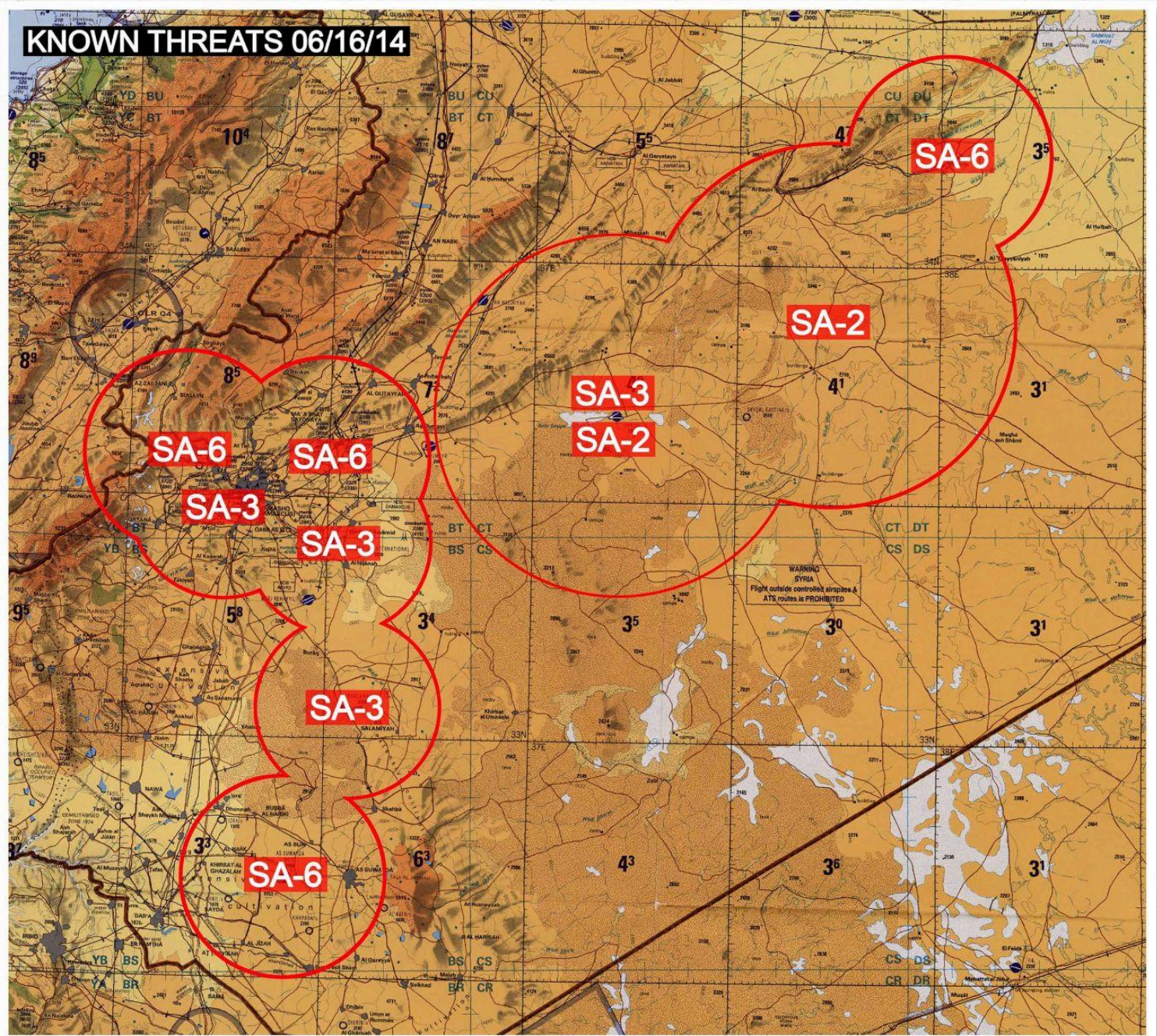
WEATHER
SCATTERED 8K'
WIND 205, 7Kn @ SURFACE
165, 16Kn @ 6600'
190, 25Kn @ 26000'
TEMP 15°C





<u>DMPI #1</u>	N33 41 24.18	E37 12 39.57	ELEV 2274'
<u>DMPI #2</u>	N33 41 24.73	E37 12 40.70	ELEV 2274'
DMPI #3	N33 41 25.39	E31 12 41.85	ELEV 2274'
DMPI #4	N33 41 25.86	E37 12 43.06	ELEV 2274'
DMPI #5	N33 41 54.95	E37 13 01.97	ELEV 2274'
DMPI #6	N33 41 54.29	E37 13 01.14	ELEV 2274'
DMPI #7	N33 41 53.28	E37 13 02.81	ELEV 2274'
DMPI #8	N33 41 52.18	E37 13 04.51	ELEV 2274'



**THREATS:****SA-2 23NM****SA-3 10NM****SA-6 - 15NM****SA-8 - 6NM <20,000'****SA-15 - 8NM <25,000'****MANPAD <20,000'**

CODEWORDS**AFTERLIFE - MEZZEH AB****BADLANDS - BEKAA VALLEY****CROSSCUT - WUJAH AL HUJAR AIRSTRIP (LAF CONTROL)****DIAMOND - KHALKHALAH AB****EVERGLADES - RUSSIAN OPERATING AREA****FREEFALL - BEIRUT****GRAPEVINE - DAMASCUS IAP****HONEYPOT - TRIPOLI****ICEBOX - ISRAEL & ISRAELI CONTROLLED TERRITORY****JACKHAMMER - SAYQAL AB****KALEIDOSCOPE - RENE MOUAWAD AIRSTRIP (RUSSIAN CONTROL)****LIMA ALPHA - LEBANON ENTRY****LIMA BRAVO - LEBANON EXIT****MANHATTAN - UNSFL HQ NAQOURA****ORACLE - DEIR EZ-ZOR AB****ROADHOUSE - BULLSEYE****STEEPLEJACK - DAMASCUS****TOYBOX - UNSFL FOB****TRASHCAN GOLF - UNSFL GHAZZE PLATOON HOUSE****TRASHCAN TANGO - UNSFL TAALABAYA PLATOON HOUSE****TRASHCAN MIKE - UNSFL MOUNTAIN PLATOON HOUSE****UNDERWORLD - THA'LAH AB****WHITewater - BEIRUT RAFIC-HARIRI IAP**