

COMMS PLAN

	ARC-210	FREQ	UHF (ARC-164)	FREQ	VHF FM (ARC-186)	FREQ
1	ATIS AL UDEID	123.75	ATIS AL UDEID	237.2	CAJUN 1	32.3
2	AL UDEID GRND	135.5	AL UDEID GRND	292.0		
3	AL UDEID TWR	122.5	AL UDEID TWR	293.65		
4	ARCO	340.0	ARCO	340.0		
5	KANDAHAR ATIS	127.1	SPARTAN	321.5		
6	K'HAR ARRIVAL	124.0	SHELL	350.0		
7	K'HAR APPR'CH	121.1	TEXACO	320.0		
8	KANDAHAR TWR	125.5				
9	K'HAR GROUND	119.5				
10	SPARTAN	321.5				
11	SHELL	350.0				
12	TEXACO	320.0				
13						
14						
15						
16						
17						
18						
19						
20						
21						
22						
23						
24						
25						

AFTER DEPARTURE FORM UP KC-135 'ARCO'

ARCO 340 MHz, TCN 66X.

FOLLOW ARCO TO AFGHAN BORDER THROUGH 'BOULEVARD' IN PAKISTAN.

ARCO DEPART AT BORDER, PROCEED NORTH TO WAYPOINT 1.

CHECK IN E3 SPARTAN, 321.5 MHz.

WP1 - TURN EAST FOR APPROACH TO KANDAHAR.

KANDAHAR TOWER AIRSPACE 50NM <20,000 FT.

AIRFIELD INFORMATION

KANDAHAR

Coordinates: North 31 30 21, East 65 50 53

Airfield Elevation: 3340 ft MSL

Runway Heading: 054 / 234

Runway Dimensions: 141 x 10,177 ft

Min. Taxiway Width: G, W, F - 75 ft
A, B, C, D, E - 100 ft

Taxiway G can be utilized for Emergency Landings (75 ft x 7552 ft)

Runway Dimensions: 141 ft x 10,177 ft

PAPI: RWY 05 / RWY 23

TACAN: KAF 75X

ATIS: 127.1 MHz

GROUND: 119.5 MHz

TOWER: 125.5 MHz

APPROACH/
DEPARTURE: 121.1 MHz

ARRIVAL: 124.0 MHz

HAZARDS: Terrain - elev. 4540 ft MSL, 3.5nm NW of airfield.
Terrain - elev. 4897 ft MSL, 13nm E of airfield.

RESTRICTIONS: Min alt for overflight of KHAR Heliport 3900 ft MSL,
restriction applies from north side of KHAR RWY to
river 2nm NW.

All airspace within 50nm of KAF and below FL200
under control of KHAR tower.

FARP

KAF HELIPORT

MUSTANG

EMERGENCY LANDING

SLING LOAD AREA

WHISKEY - UNIFORM

VICTOR

TANGO

YANKEE

ZULU

SIERRA

X-RAY

UAE

DAC

STALLION

TAXIWAY G

3306'

054

G4

G3

G2

TAXIWAY W

W1

E

MIKE

NOVEMBER

LIMA

KILO

D2

D1

TAXIWAY F

C2

C1

B2

B1

A

INDIA

HOTEL

GOLF

PANTHER

AAF

QUEBEC

OSCAR

DOS

NOVEMBER

MIKE

LIMA

KILO

JULIET

INDIA

HOTEL

GOLF

PANTHER

AAF

3338'

234

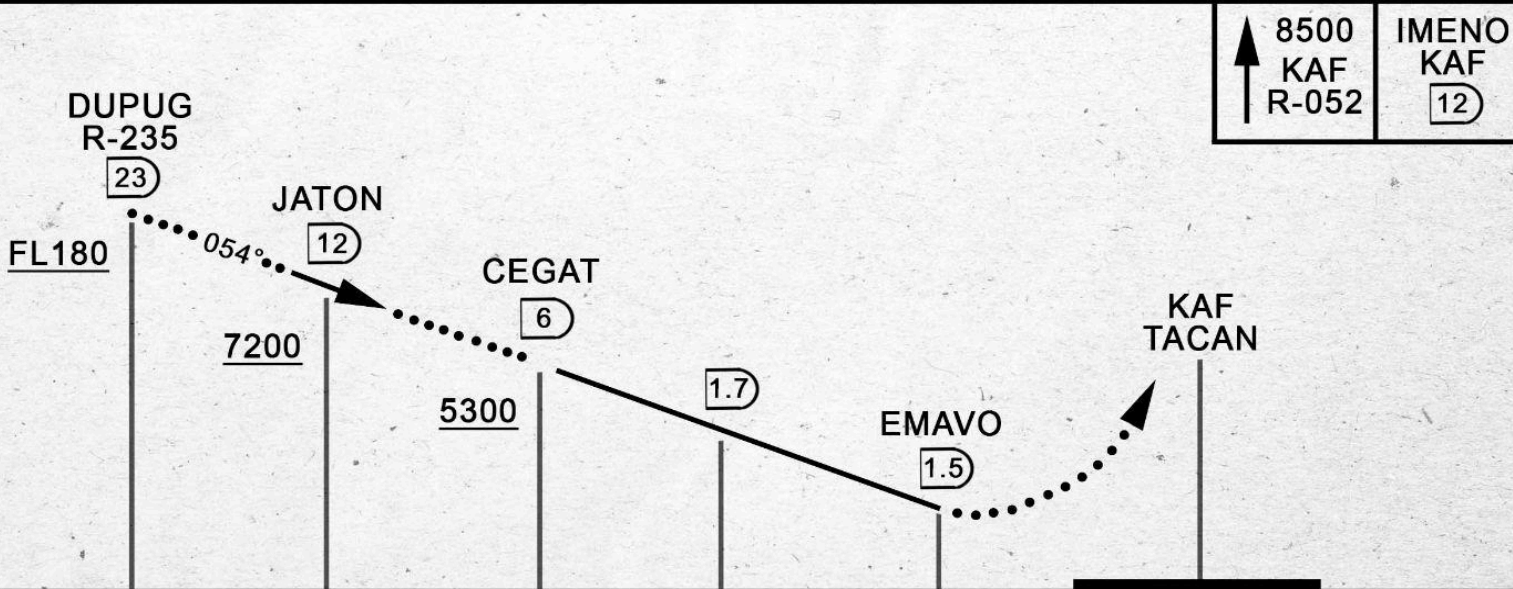
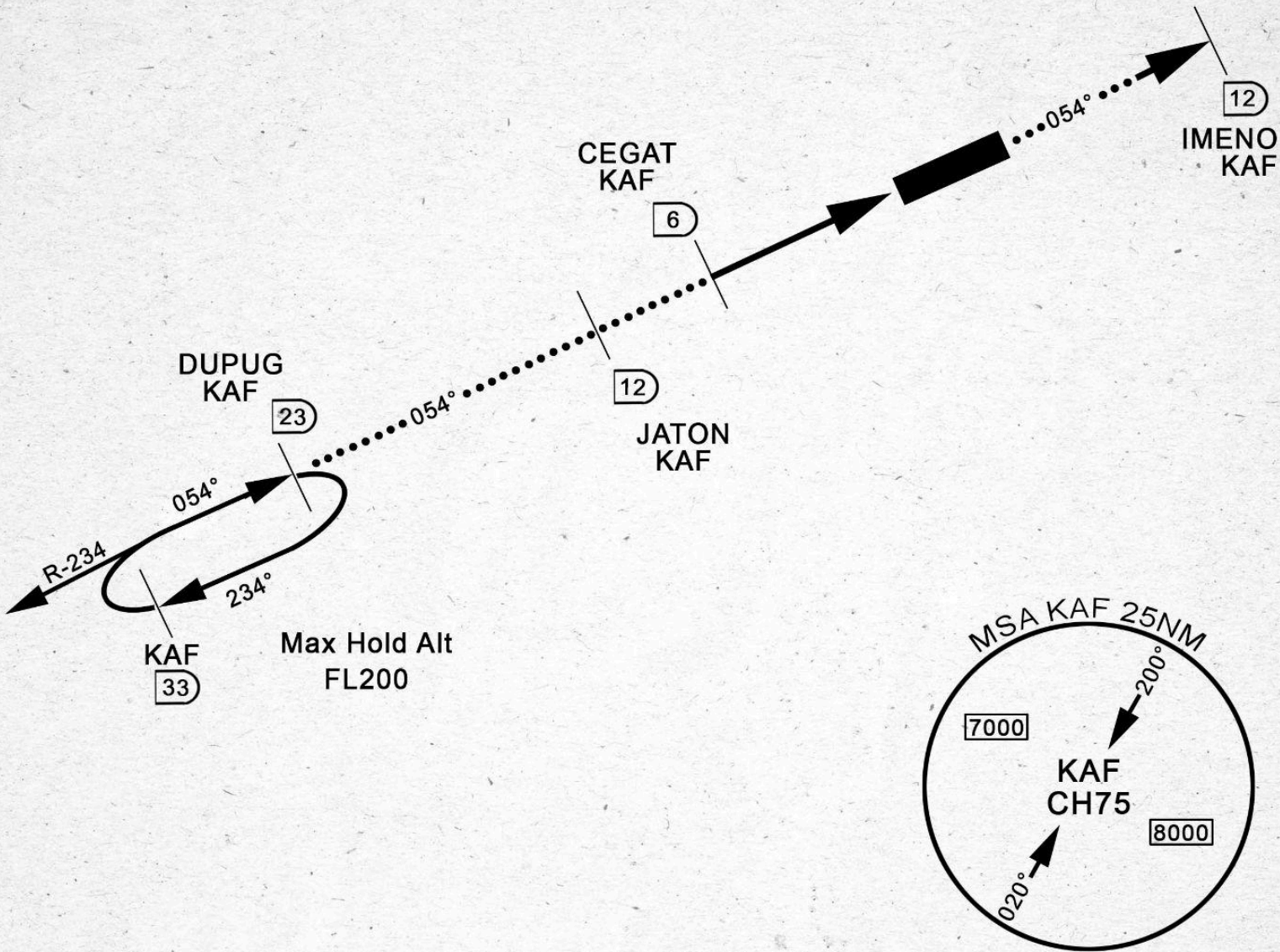
DAC - DANGEROUS AIR CARGO
DOS - DEPARTMENT OF STATE
AAF - AFGHAN AIR FORCE

RWY 05 APPROACH

KANDAHAR (OAKN)

TACAN KAF Chan 75X	APCH CRS 055°	Rwy Idg 10,487 THRE 3306 Elev 3340
-----------------------	------------------	--

ATIS 127.1	KANDAHAR TOWER 125.5	KANDAHAR ARRIVAL 124.0	KAN'HAR APP 121.1	GROUND 119.5
---------------	-------------------------	---------------------------	----------------------	-----------------



RWY 05 APPROACH

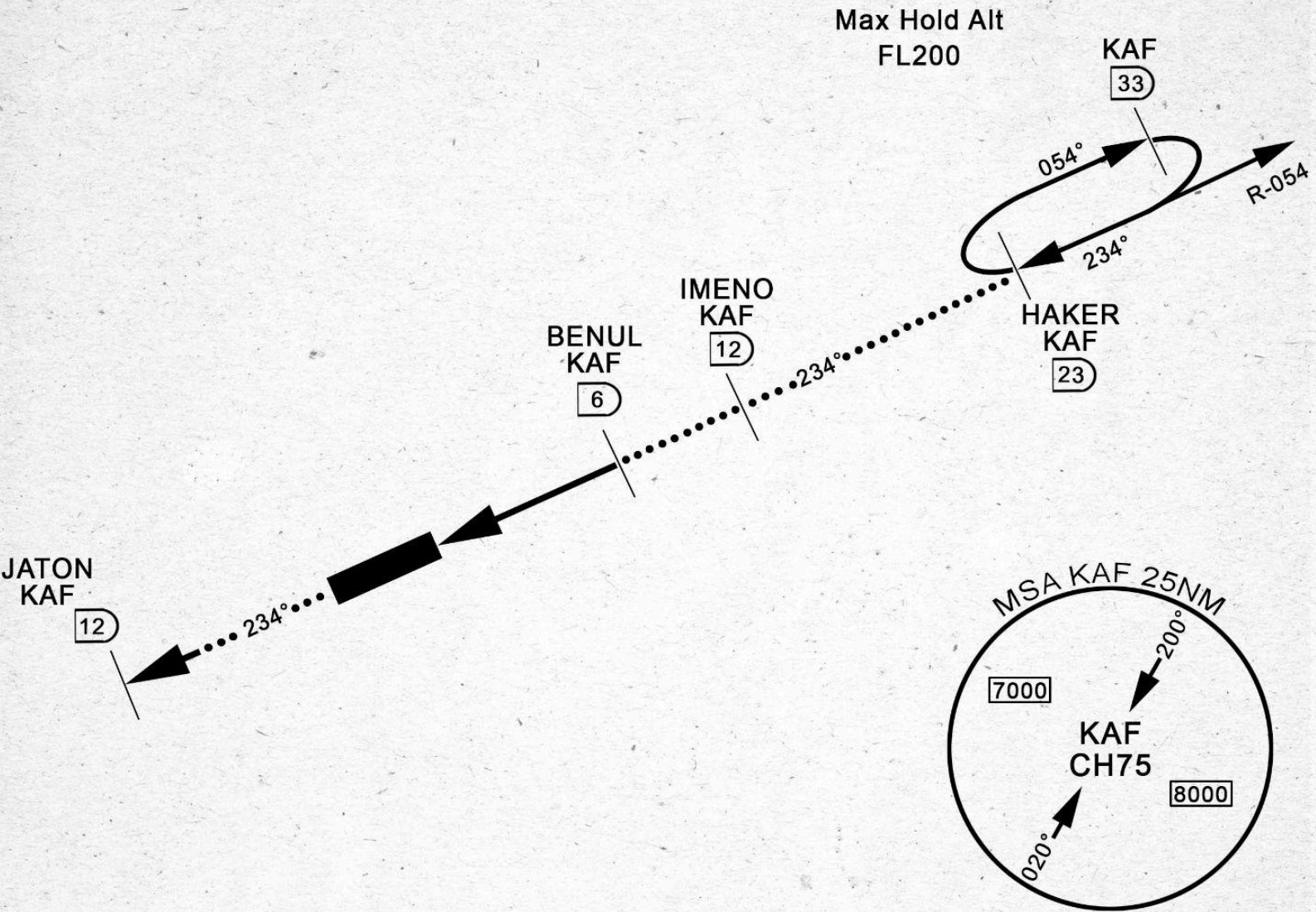
KANDAHAR (OAKN)

RWY 23 APPROACH

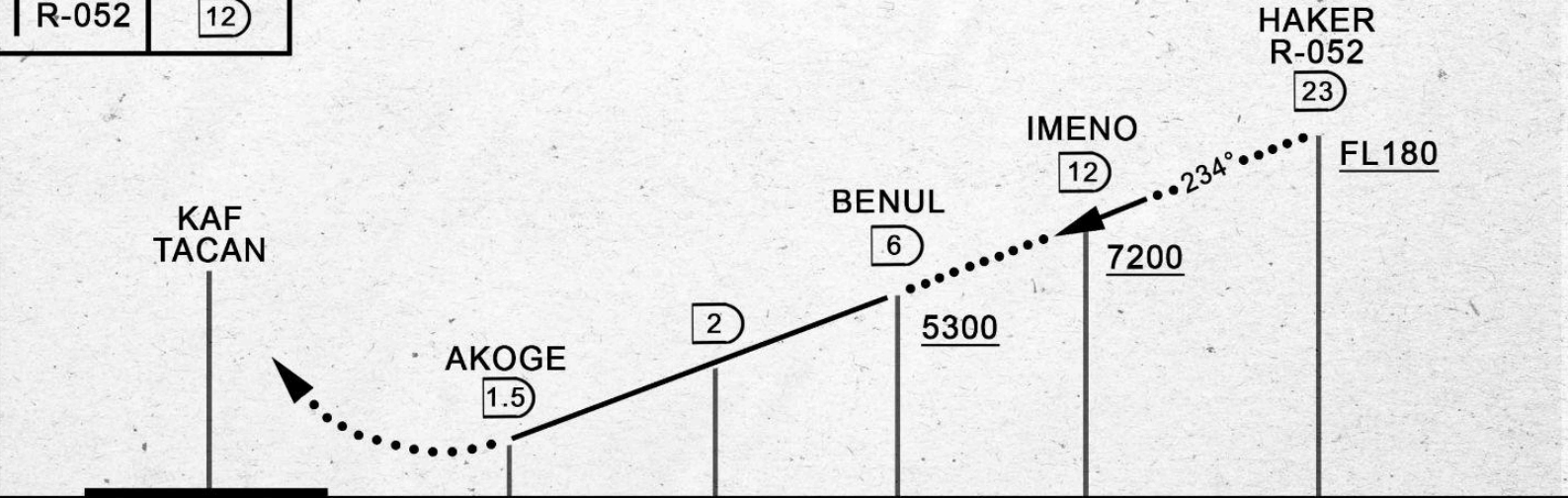
KANDAHAR (OAKN)

TACAN KAF Chan 75X	APCH CRS 232°	Rwy Idg 10,483 THRE 3340 Elev 3340
-----------------------	------------------	--

ATIS 127.1	KANDAHAR TOWER 125.5	KANDAHAR ARRIVAL 124.0	KAN'HAR APP 121.1	GROUND 119.5
---------------	-------------------------	---------------------------	----------------------	-----------------



8500 KAF R-052	JATON KAF 12
----------------------	--------------------



RWY 23 APPROACH

KANDAHAR (OAKN)