

CALLSIGN DEVIL 3-1

DATE 15/07/14

MISSION # 4122 STEP 02:30Z START 02:55Z LAUNCH VUL START VUL END	SIDE#	PILOT	TACAN	FUEL
	107	STEEP DV 3-1		15,291 lb
	101	SOPRANO DV 3-2	32X	BINGO 4,600 lb
				WEIGHT 47,635 lb

LOADOUT

1	2	3	4	5	6	7	8	9
AIM 9X	2* GBU 12	2* GBU 38	ATFLIR	FUEL	AIM 120C	FUEL	MK 83 HD	AIM 9X

FUZING

FMU-152 SMS FMU-152 OMS

M904E4
FMU-152

CMS: 70 CHAFF 50 FLARE

GUN: HEI-T

DEPARTURE CASE

BRC 308

DEPART RADIAL

TACAN 70X

PATTERN ALT 2000'

ICLS CH 18

LINK 4 330.5

WEATHER

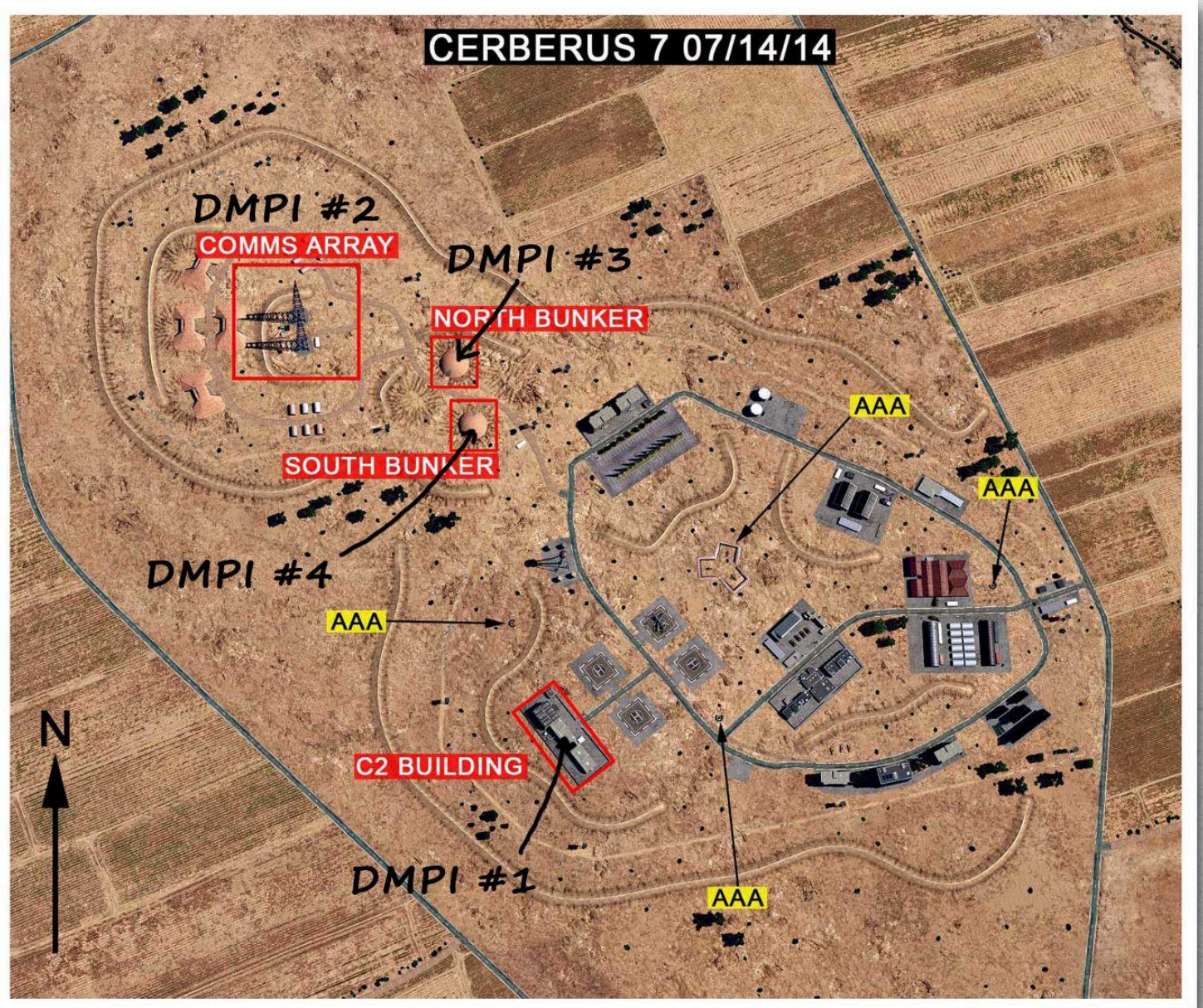
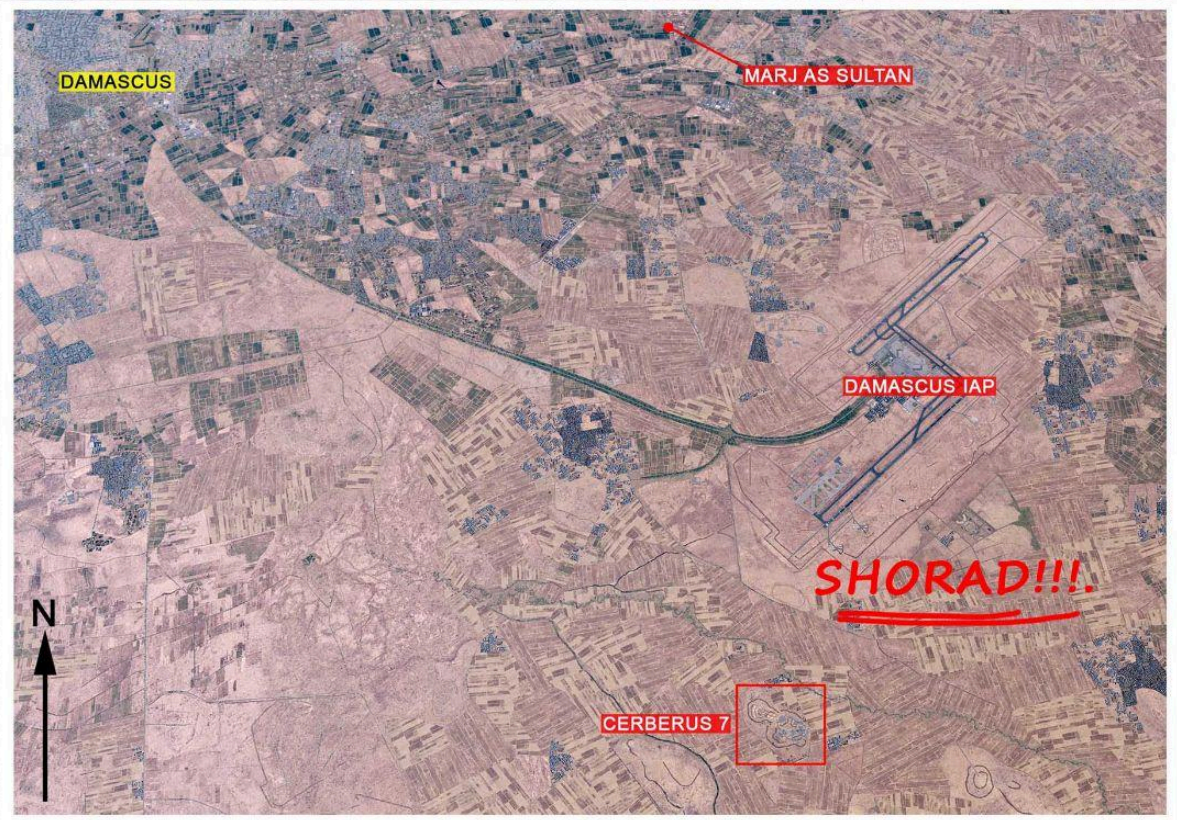
BROKEN 10000' MSL

WIND 308, 7kn @ SURFACE

259, 12Kn @ 6600'

302, 24Kn @ 26000'

TEMP 24°C

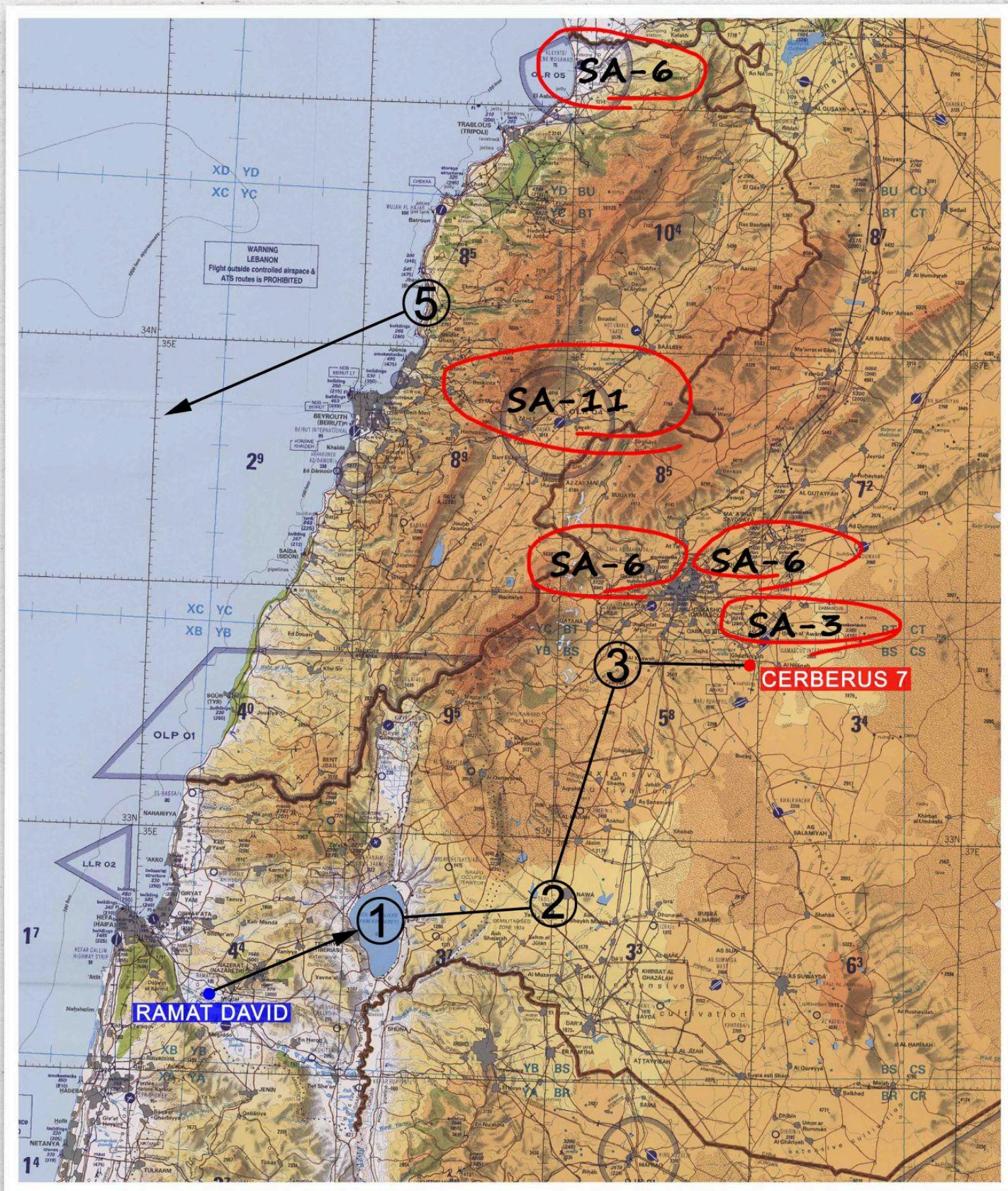


DMPI #1 N33 21 10.50, E36 29 02.22, 1988' MSL

DMPI #2 N33 21 24.37, E36 28 53.20, 1988' MSL

DMPI #3 N33 21 22.73, E36 28 59.12, 1988' MSL

DMPI #4 N33 21 20.66, E36 28 59.68, 1988' MSL



CODEWORDS**AFTERLIFE - MEZZEH AB****BADLANDS - BEKAA VALLEY****CROSSCUT - WUJAH AL HUJAR AIRSTRIP (LAF CONTROL)****DIAMOND - KHALKHALAH AB****EVERGLADES - RUSSIAN OPERATING AREA****FREEFALL - BEIRUT****GRAPEVINE - DAMASCUS IAP****HONEYPOT - TRIPOLI****ICEBOX - ISRAEL & ISRAELI CONTROLLED TERRITORY****JACKHAMMER - SAYQAL AB****KALEIDOSCOPE - RENE MOUAWAD AIRSTRIP (RUSSIAN CONTROL)****LIMA ALPHA - LEBANON ENTRY****LIMA BRAVO - LEBANON EXIT****MANHATTAN - UNSFL HQ NAQOURA****ORACLE - DEIR EZ-ZOR AB****ROADHOUSE - BULLSEYE****STEEPLEJACK - DAMASCUS****TOYBOX - UNSFL FOB****TRASHCAN GOLF - UNSFL GHAZZE PLATOON HOUSE****TRASHCAN TANGO - UNSFL TAALABAYA PLATOON HOUSE****TRASHCAN MIKE - UNSFL MOUNTAIN PLATOON HOUSE****UNDERWORLD - THA'LAH AB****WHITEWATER - BEIRUT RAFIC-HARIRI IAP**